

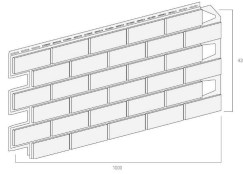
SOLID BRICK
Klinkerstrukturfassade



PRODUKTINFORMATIONEN

SBP Fassadenelement 1000 x 420 mm

TYPE = 10 Sbk = 42 m²
Höhe ca. 17 mm
Flächengewicht ca. 4,8 kg/m²
Art. Nr. 30004892 York
Art. Nr. 30004889 Bristol
Art. Nr. 30004890 Cornest
Art. Nr. 30004899 Center
Art. Nr. 30004898 Coventry



SBNZ Passform Außenecke 92 x 92 x 420 mm

TYPE = 4 Sbk
Art. Nr. 30004894 York
Art. Nr. 30004892 Bristol
Art. Nr. 30004890 Cornest
Art. Nr. 30004899 Center
Art. Nr. 30004898 Coventry



SB. Passform Innenecke 92 x 420 mm

Art. Nr. 30004900 York
Art. Nr. 30004891 Bristol
Art. Nr. 30004890 Cornest
Art. Nr. 30004899 Center
Art. Nr. 30004908 Coventry



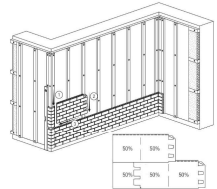
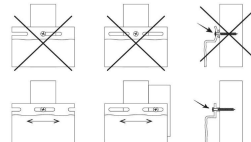
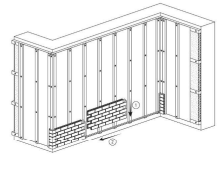
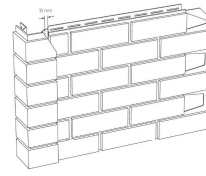
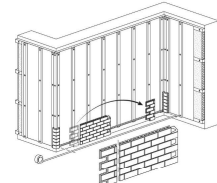
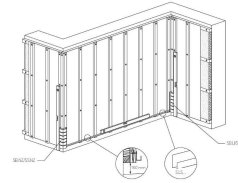
SLS Starterprofil



FS.262 oberes Lüfterprofil 2-teilig



MONTAGEHINWEISE



SOLID BRICK
Klinkerstrukturfassade



MONTAGEHINWEISE

